



How To: remove and refit sill finishers

Courtesy of **tminal**

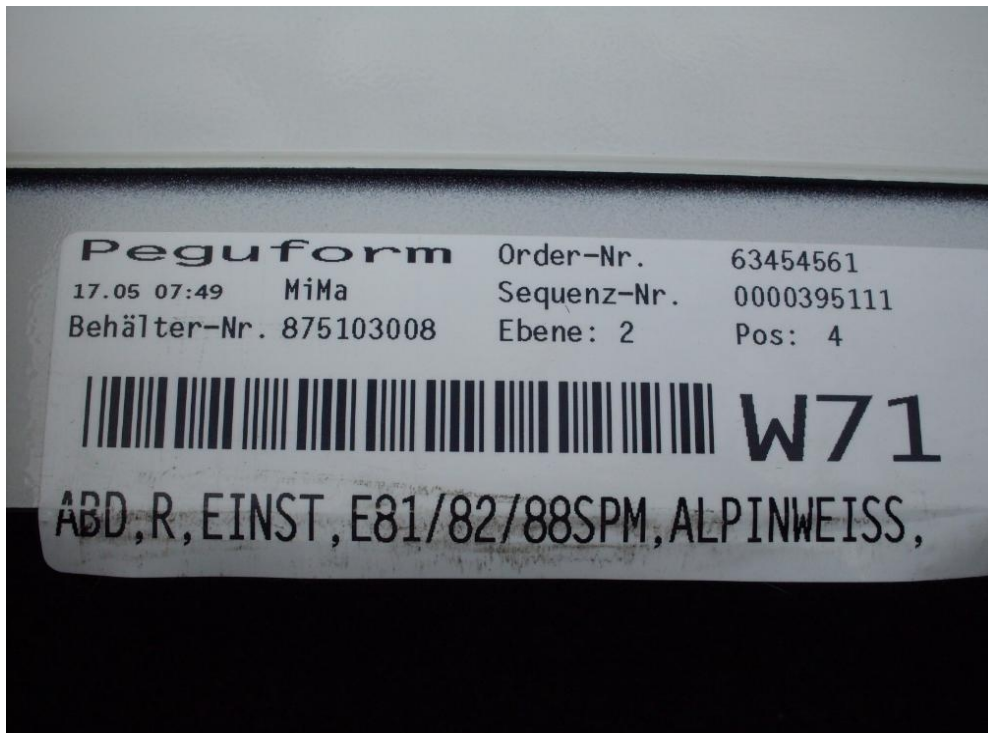
How to remove refit sills – 3 door, coupe and convertible.

Here are the steps I followed when removing my 3 door OEM SE sills and fitting 3 door OEM MSport sills, these instructions also apply for fitting the sill from the BMW performance range. There will be some variation for a 5 door in terms of fixing quantities and door sill trim removal but the method should still be roughly the same

Tools required – Small flat blade screwdriver, trim fork, plastic trim removal tool, ratchet and TX25 bit.



Part information to show that the 3 door hatch, coupe and convertible use the same part.



Time taken to complete both sills – 1.5 hours

Removal

Step 1

Remove door entry trim strip from door aperture. This is tricky to remove as some of the clips will stay in the body (as shown in the pic in step 2) and are a pain to get out. Slide the trim fork under the rubber on the trim and gently prize the trim upwards and work your way along a little bit at a time. You may wish to protect any paintwork with masking tape to avoid any accidents.

Step 2

Remove the 5 centre pins from the 5 black scrivenets with the trim fork.



Step 3

Remove the 5 scrivets from the body with the trim fork.

**Step 4**

Underneath the car you will see 10 TX25 fixings, these need to be undone using a ratchet and the TX25 bit. Once removed gently remove the lower edge of the sill from between the body and the under-body protection panel, this will make it easier to remove after the next step.

Step 5

Is to gently pull the front and rear edge of the sill outboard to release the sill from the body mounting brackets. It is best to have one person do the front first and support the sill whilst the rear is released, this avoids the sill falling on the floor and causing damage. If possible use some carpet to rest the sill on



Step 6

Remove the white clips that are remaining in any holes from the top finisher and re-fit to the finisher ready for fitment later. This is tricky but I used the trim fork and plastic trim removal tool, oh and mind your eyes when they fly out and mind your paintwork!

Step 7 - Optional

I cleaned the area and applied 1 coat of collinite wax for some protection.

**Refit****Step 8**

Load the sill to the body ensuring the lower edge is now between the body and the under-body protection and clip the front and rear edge into the body mounted brackets until flush with the front fender and rear ¼ panel.

Pic shows sill located into position



Pic shows only 1 clip secured to sill, push gently to fully locate sill to body



Step 9

Fit the datum scrivet (4th fixing car rearward) followed by the remaining 4 scrivets in any order.



Step 10

Load the fixing pins to the scrivets in any order.

Step 11

Secure the 10 under-body fixings with the ratchet and TX25 bit, torque is only approx 1.0Nm so do not over tighten.

Step 12

Refit the door sill finisher trim by locating the white clips on the trim into the holes that remain on the body.

I think that is everything

Here are the afters

